



MONTHLY REPORT

November 2023

November 2023 Overall

BSP SouthPool

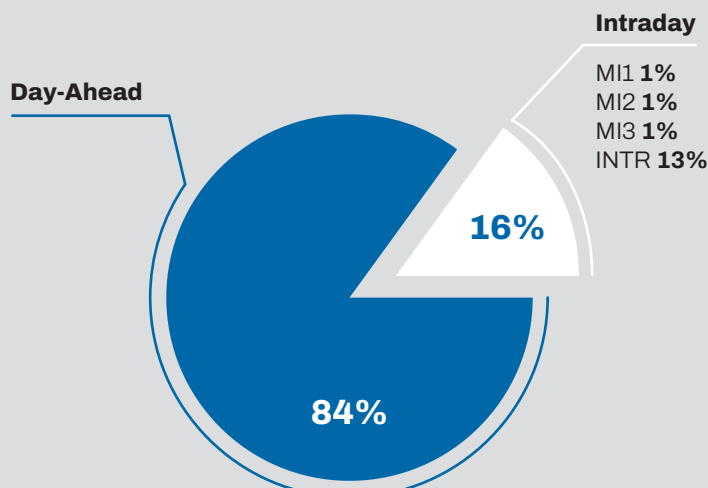
Day-Ahead

Volume (MWh)		
Total	835.095	↓ 15,8%
Avg. daily	27.837	↓ 13,0%
Max. daily	34.502	↓ 20,1%
Min. daily	20.855	↓ 2,6%

Price (€/MWh)					
	Avg. Daily		Max. Daily	Min. Daily	Spec. Daily Volatility
Base	95,74	↓ 7,6%	166,68	27,98	10,7%
Euro-Peak	112,9	↑ 0,6%	213,86	34,11	11,1%

Intraday

Volume (MWh)		
MI1	11.288	↑ 3,3%
MI2	8.949	↓ 7,5%
MI3	8.951	↓ 35,6%
INTR	131.995	↑ 17,5%



Day-Ahead
835.095 GWh
(-16% MoM)

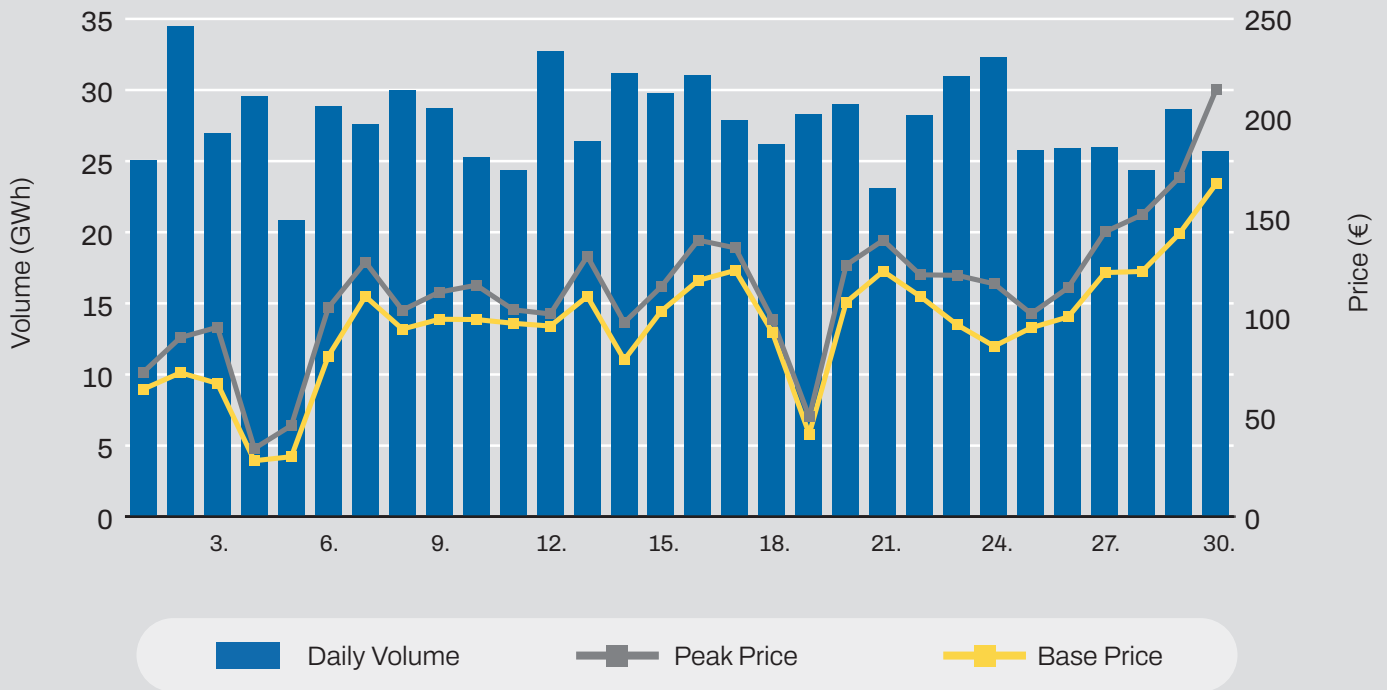
Base Avg.
95,74 €/MWh
(-8% MoM)

Intraday
161.183 GWh
(+10% MoM)

Daily Average
27.837 GWh
(-13% MoM)

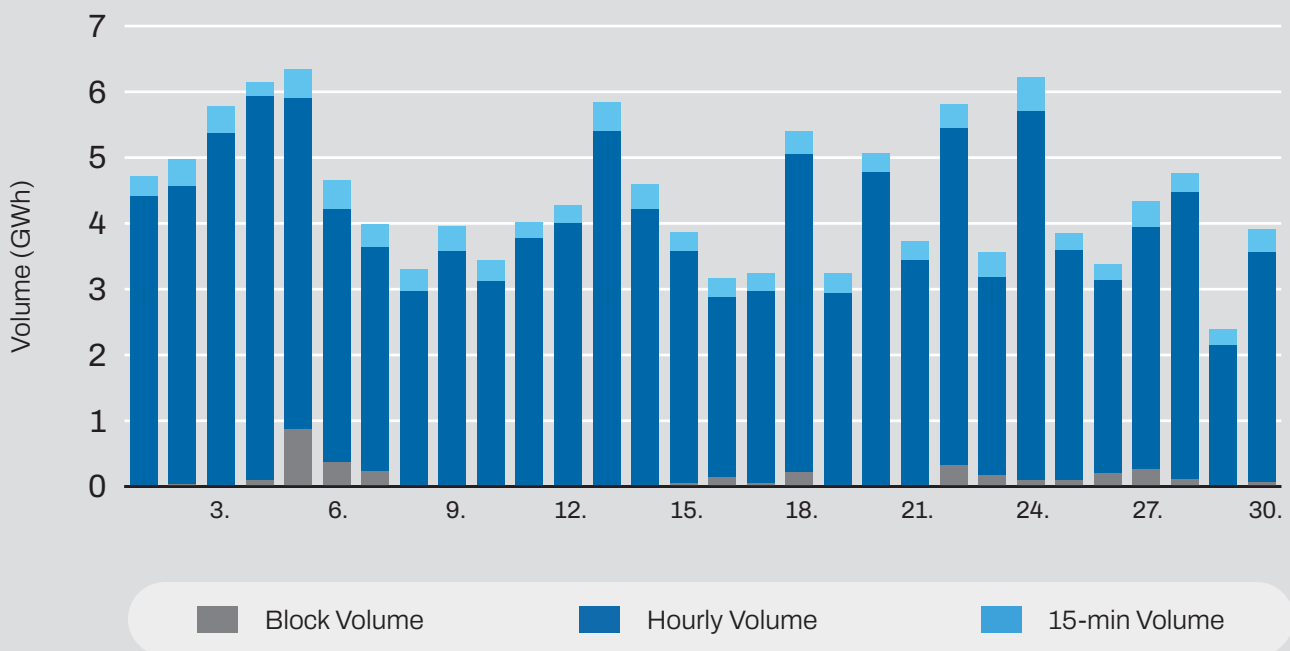
Daily Record
34.502 GWh
(-20% MoM)

Day-Ahead Volumes and Prices



Intraday Continuous Trading

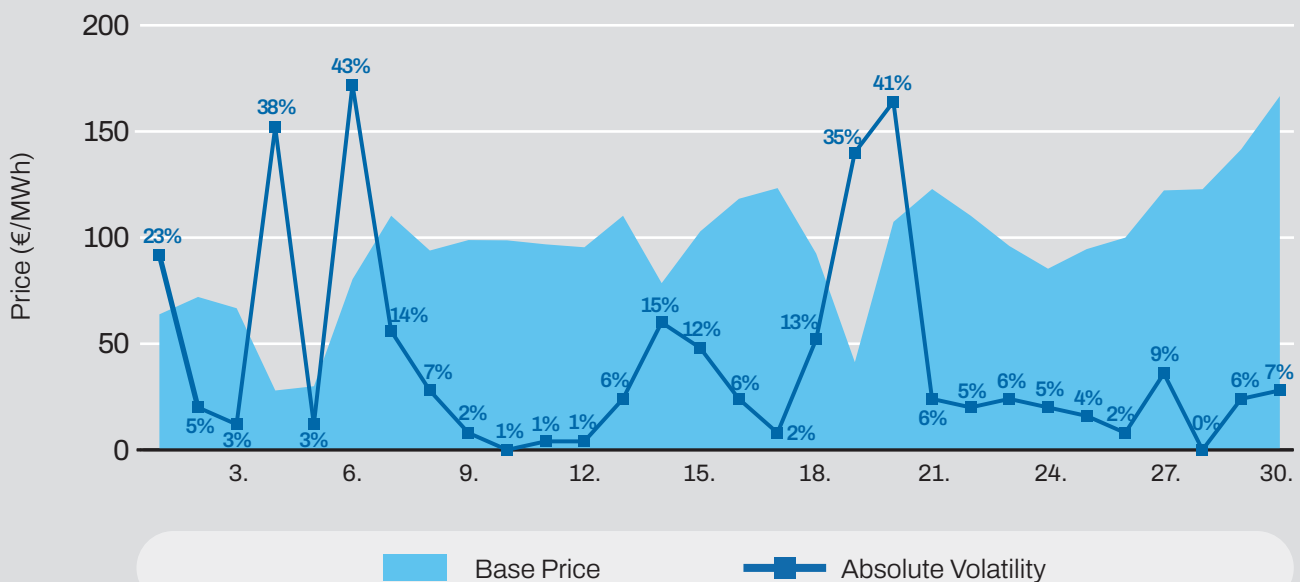
Volumes by Products



Average Monthly Day-Ahead Auction

Average Hourly Prices						Cross-Zonal Capacities	
Hour	Volume (MWh)	Average price (€/MWh)	Hour	Volume (MWh)	Average price (€/MWh)	Export/Import	Allocated (MWh)
1	1.006	69,36	13	1.065	91,67	SI → IT	347.616
2	996	62,03	14	1.101	94,43	IT → SI	46.702
3	1.012	59,17	15	1.135	104,86	SI → AT	37.469
4	1.041	56,10	16	1.187	117,41	AT → SI	437.993
5	1.030	57,76	17	1.311	132,54	SI → HU	91.311
6	1.100	68,17	18	1.421	142,22	HU → SI	118.079
7	1.186	92,12	19	1.398	138,91	SI → HR	57.552
8	1.206	108,99	20	1.336	124,85	HR → SI	79.661
9	1.201	112,35	21	1.318	109,05	Total	1.216.382
10	1.131	105,24	22	1.240	95,58		
11	1.067	96,93	23	1.195	89,06		
12	1.100	93,45	24	1.052	75,40		

Daily Volatility of Base Price

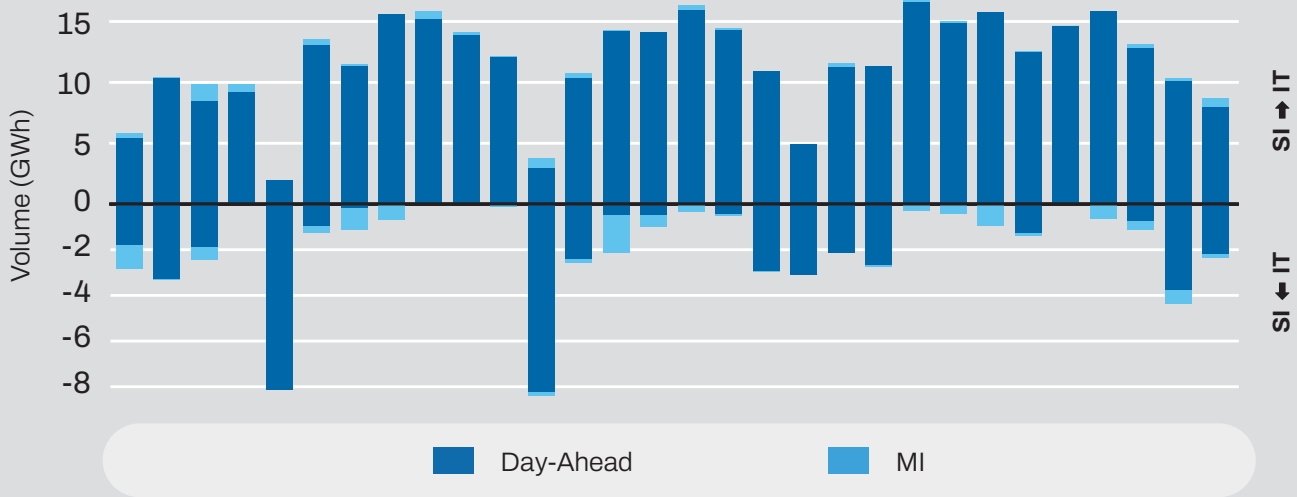


MI1, MI2, M3 Implicit Auctions

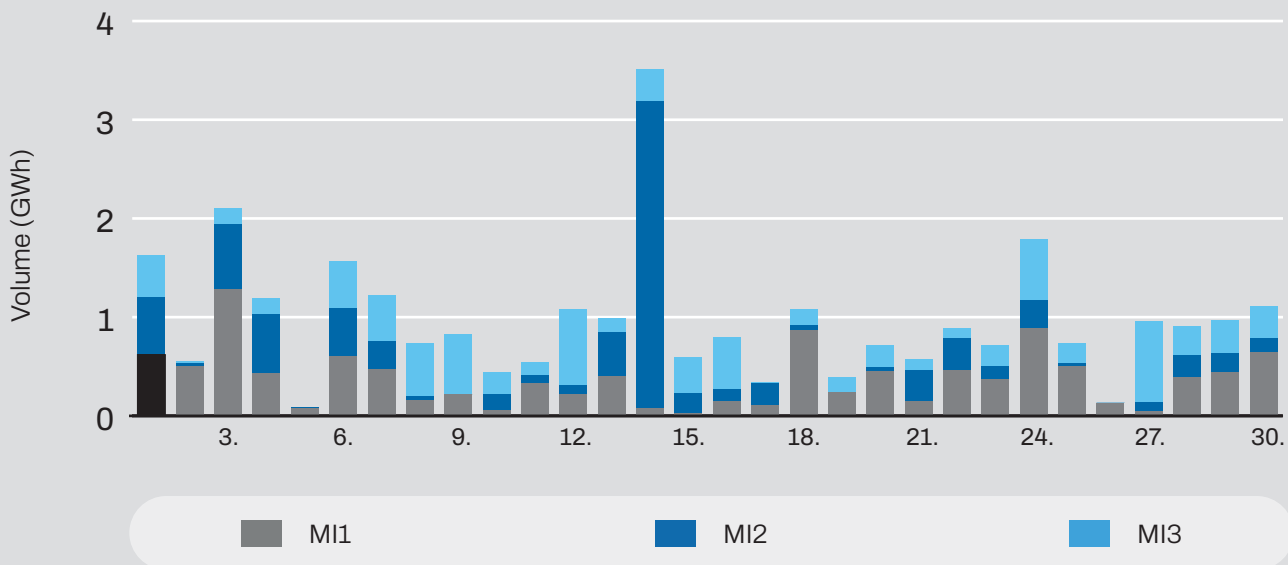
Cross-Zonal-Capacities

	SI → IT	IT → SI
Offered (MWh)	59.364	385.018
Allocated (MWh)	8.017	10.557
% Allocated	13,51%	2,74%

Allocated CZC Values on Slovenian-Italian Border



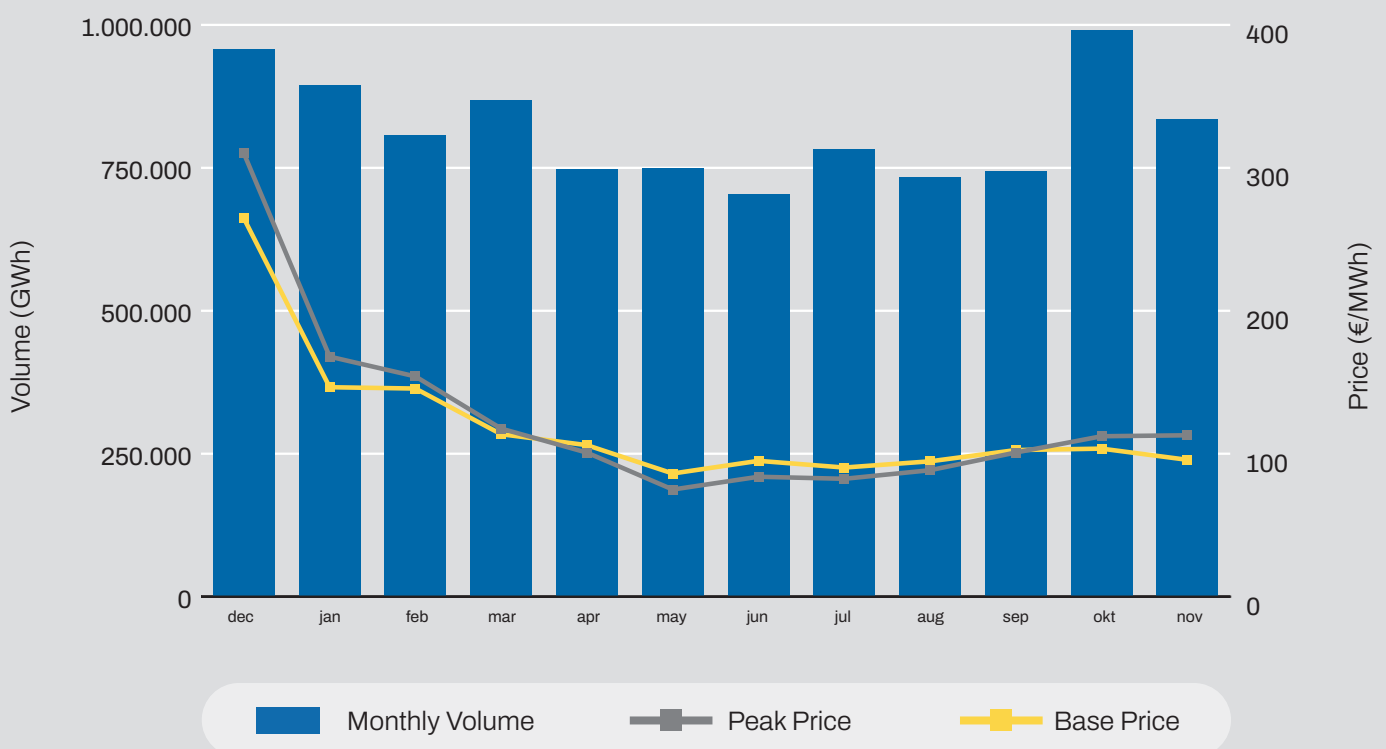
Intraday Auction



Comparison

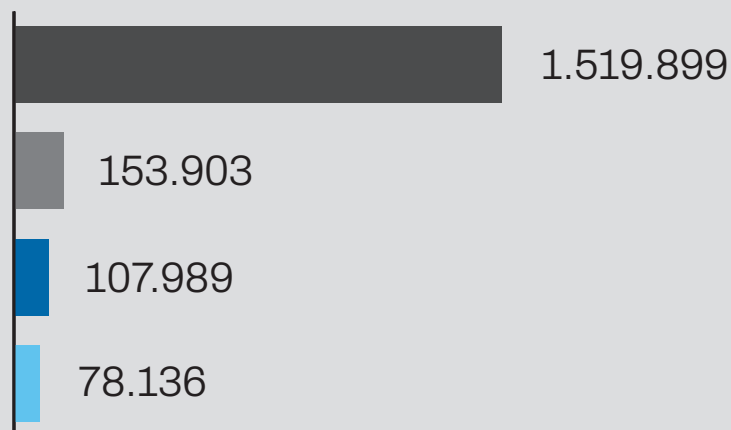
Day-Ahead Auction			
	November 2023	October 2023	November 2022
Avg. Daily Volume (MWh)	27.837	31.986	33.235
Avg. Hourly Volume (MWh)	1.160	1.331	1.385
Avg. Base Price (€/MWh)	95,74	103,56	222,48
Avg. Euro-Peak Price (€/MWh)	112,9	112,23	256,27

Day-Ahead Market Volumes and Prices



Past 12 Months Trade Information

Intraday Volumes (MWh) - Total Volume from November 2022



Total Volume from November 2022

	Continuous	MI1	MI2	MI3
Dec	113.614	12.879	12.597	5.181
Jan	115.509	19.657	9.284	5.387
Feb	92.549	15.542	6.276	4.623
Mar	126.292	10.328	4.933	4.653
Apr	122.218	6.762	2.892	6.115
May	117.949	13.002	5.196	3.595
Jun	111.114	12.820	12.836	5.689
Jul	148.368	15.681	8.271	7.752
Aug	140.685	16.329	11.164	5.137
Sep	187.311	8.686	15.915	7.155
Oct	112.298	10.930	9.677	13.897
Nov	131.995	11.288	8.949	8.951

Continuous

MI1

MI2

MI3

November 2023 Overall

Day-Ahead
451.086 GWh
 (+15% MoM)

Base Avg.
96,1 €/MWh
 (-10% MoM)

Daily Average
15.036 GWh
 (+18% MoM)

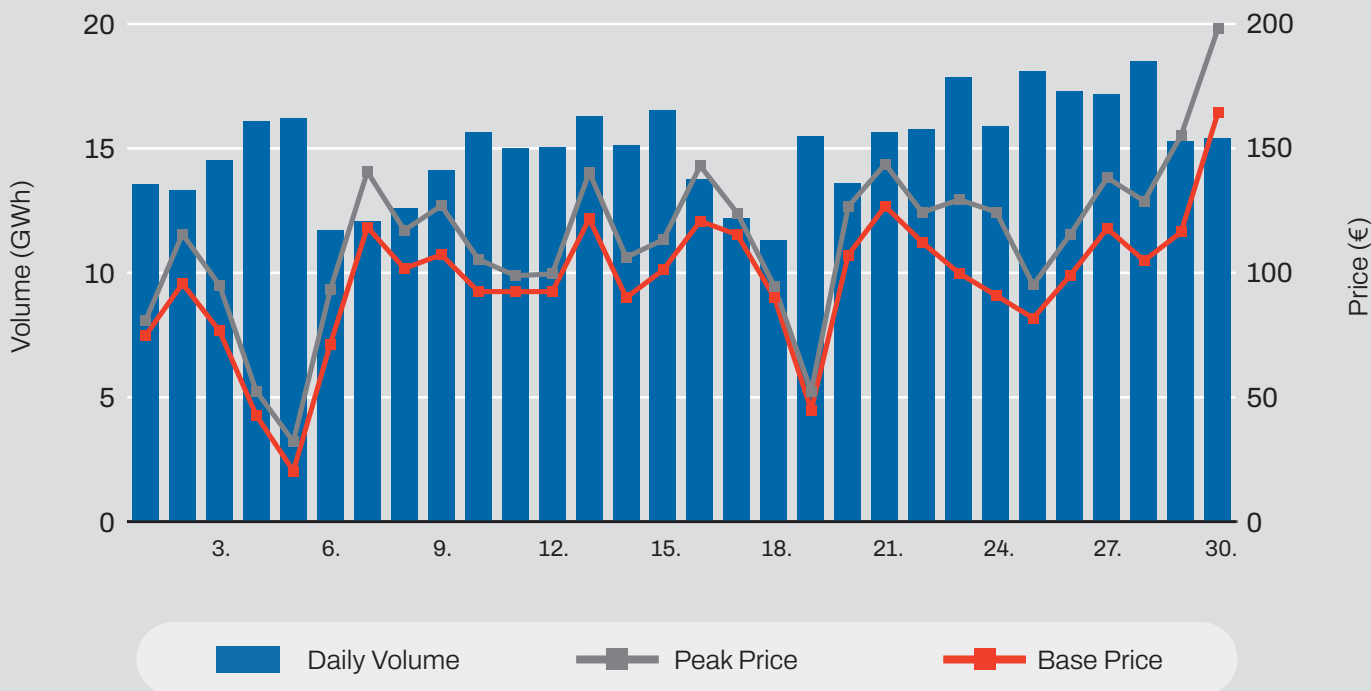
Daily Record
18.493 GWh
 (+13% MoM)

Day-Ahead

Volume (MWh)		
Total	451.086	↑14,5%
Avg. daily	15.036	↑18,3%
Max. daily	18.493	↑13,2%
Min. daily	11.304	↑20,8%

Price (€/MWh)					
	Avg. Daily	Max. Daily	Min. Daily	Spec. Daily Volatility	
Base	96,1	↓9,5%	164,04	20,29	12,5%
Euro-Peak	113,37	↓1%	197,63	32,07	11,8%

Day-Ahead Volumes and Prices

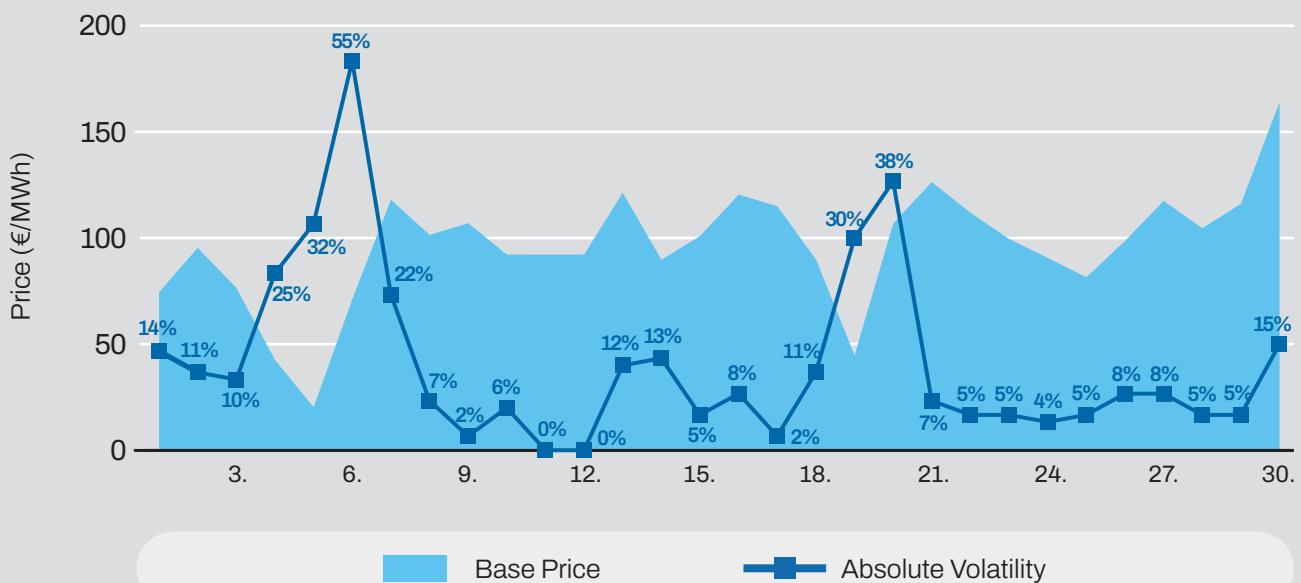


Day-Ahead Auction

Average Hourly Prices

Hour	Average Volume (MWh)	Average price (€/MWh)	Hour	Average Volume (MWh)	Average price (€/MWh)
1	577	70,88	13	574	89,83
2	597	62,87	14	595	91,50
3	599	57,62	15	600	100,39
4	617	54,81	16	652	115,33
5	612	56,74	17	716	137,31
6	623	70,02	18	686	149,57
7	694	92,60	19	683	144,73
8	667	107,40	20	695	133,21
9	617	111,20	21	668	114,84
10	591	102,45	22	634	99,24
11	579	93,77	23	597	86,26
12	565	90,88	24	598	72,94

Daily Volatility of Base Price



Intraday trading on SEEPEX started on **25th July 2023**
 Number of participants: **20**



ADEX GROUP holding company Ltd.

Dunajska cesta 156,
1000 Ljubljana, Slovenia

T SI +386 1 /620 76 76

T RS +381 11 715 28 43

E info@adex-spot.com